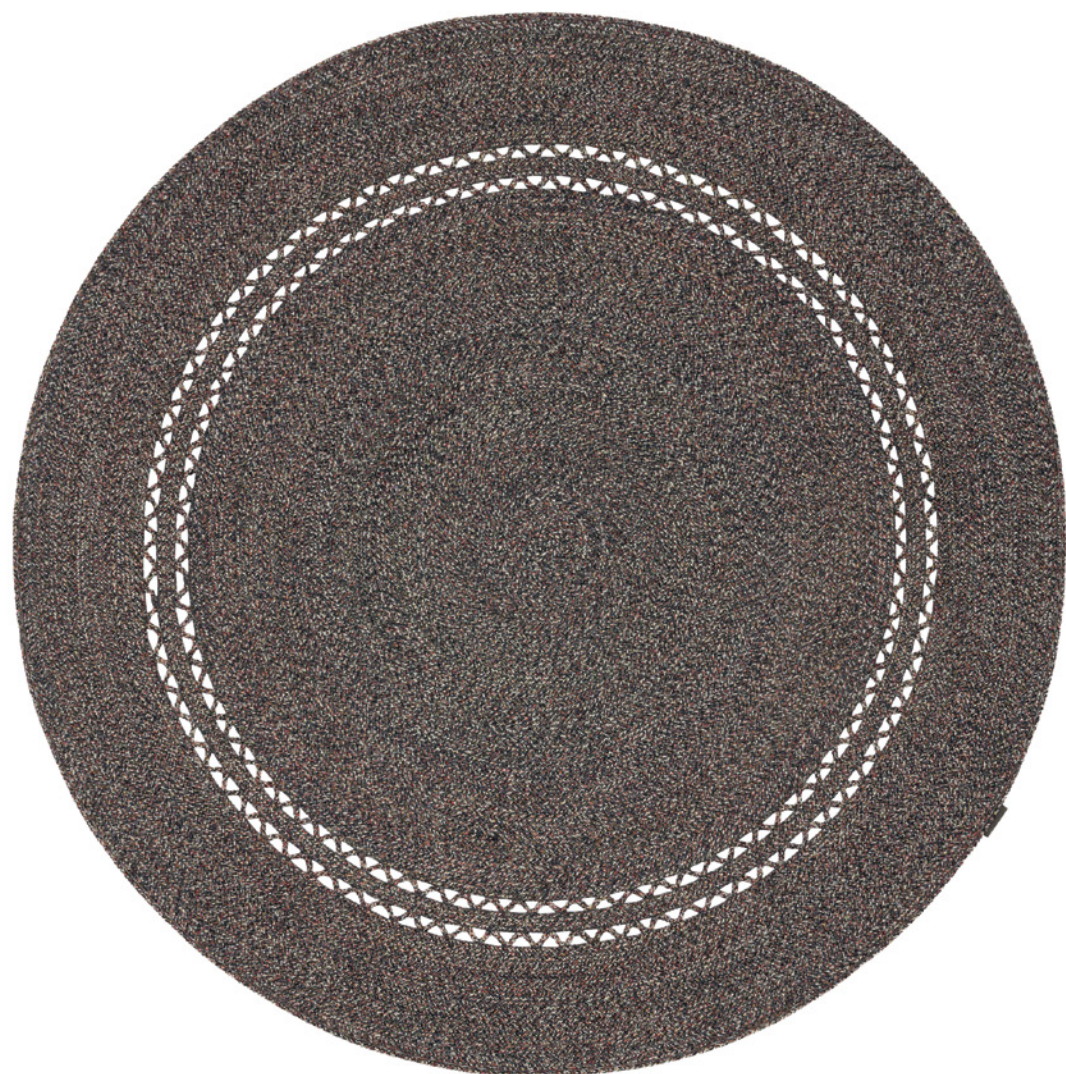


180 cm

12% of diameter



Sio Outdoor 0196

## Sio Outdoor

**Design** Margrethe Odgaard

**Production method** Stitching

**Material** 93% polypropylene, 7% polyester

**Height** 6 mm (1/4")

**Weight** 2000 g/m<sup>2</sup> (6.5 oz/sq ft)

**Maximum size** 380 cm × 500 cm (149 1/2" × 196 3/4") including border

**Maximum size oval** 250 cm × 500 cm (98 1/2" × 196 3/4") including border

**Maximum size round** Ø 380 cm (149 1/2") including border

**Size of border** 1 cm (1/2")

**Size variation** +/- 3%

**Traffic** Suitable for medium to heavy residential use with exceptions of stairways, corridors or with the use of castors. Suitable for moderate to medium commercial use with exceptions of stairways, corridors or with the use of castors

**Flammability** EN 13501-1 Dfl-s1, ASTM D 2859/CPSC FF 1-70/FF 2-70, 16 CFR 1630

**Care** Professional cleaning

**Country of origin** India

### Notes

Slight colour differences may occur

Irregularities may occur as a result of the hand crafted process

Suitable for exterior and interior use

For exterior use, care and maintenance must be adapted to weather conditions

Polypropylene is resistant to atmospheric elements such as humidity, sunlight, moisture, mildew, ocean and pool water

Pattern will be adjusted according to rug dimension

Larger sizes possible on request

Round and oval rug will be calculated as a square or rectangle

Round and oval rug will be produced as a spiral

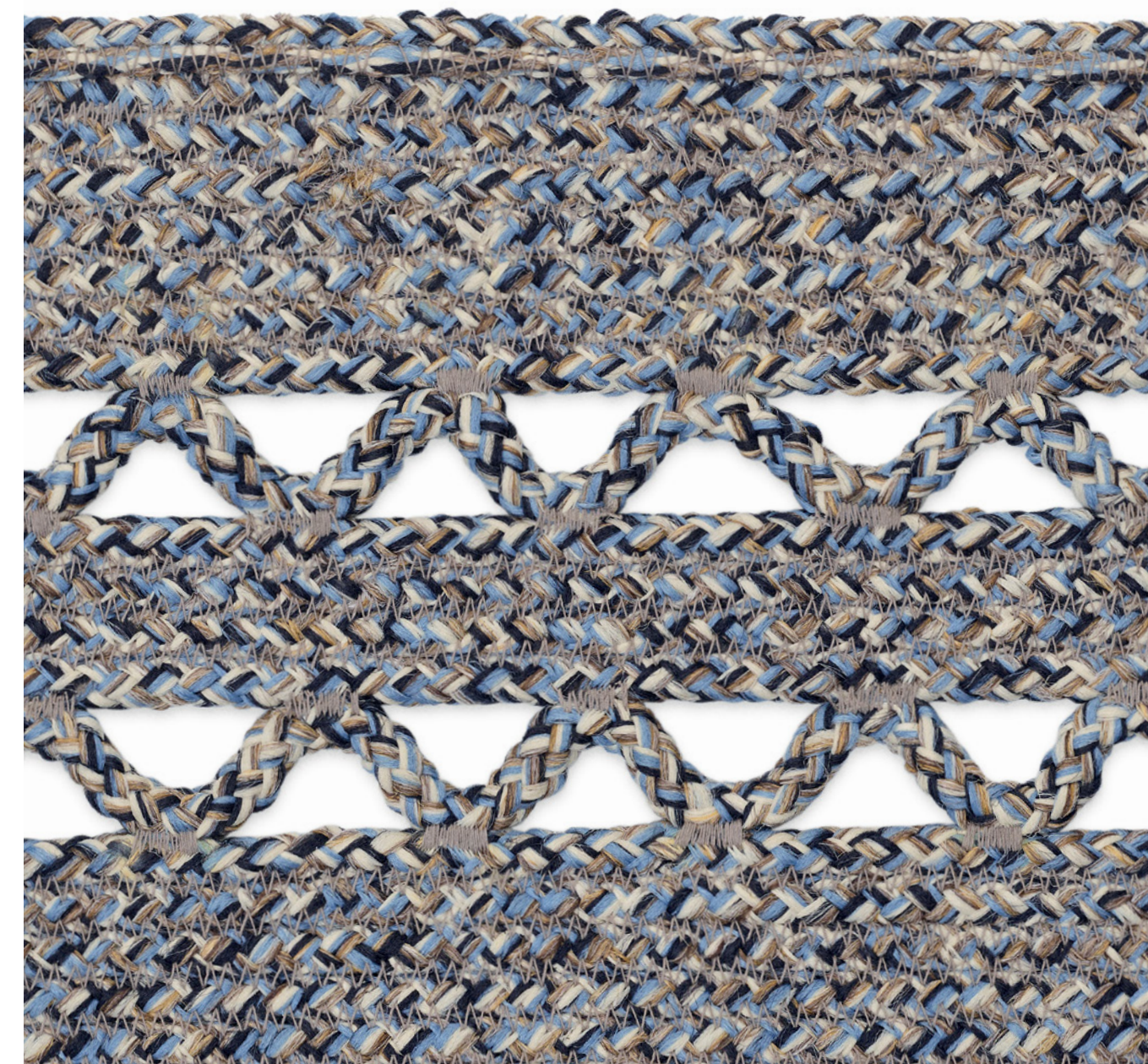
Rug underlay recommended for interior use

For more information, please visit: [kvadrat.dk](http://kvadrat.dk)

# kvadrat

## Sio Outdoor

2025 - 201590005



180 x 240 cm

12% of length



0226  
Colour corresponds with *Sia Outdoor* 0212



0276  
Colour corresponds with *Sia Outdoor* 0262



0186  
Colour corresponds with *Sia Outdoor* 0172



0396  
Colour corresponds with *Sia Outdoor* 0382



0756  
Colour corresponds with *Sia Outdoor* 0742



0196  
Colour corresponds with *Sia Outdoor* 0182



0556  
Colour corresponds with *Sia Outdoor* 0542